

JANUARY NEWSLETTER

FOLLOW CSS FOR REGULAR UPDATES

Just like that, the Christmas and holiday season has come to an end! We hope you all enjoyed a rejuvenating break and are geared up to kick off the new year with enthusiasm and safety in mind!

Our newsletters and safety campaign will be published at the start of each month. Our aim is to inform and highlight some positive news throughout the year

Happy New Year!
2025

MEET THE TEAM

DAYNA HOWARD

FOLLOW US!



Hi everyone, my name is Dayna, I joined CSS in November as a Safety Advisor and so far, have enjoyed every moment of it. I started in Health & Safety almost 6 years ago now and continue to grow and learn new things each day, which is why I am so passionate about what I do, no day is ever the same!

I find momentous joy in communicating and creating meaningful relationships with both clients and operatives to ensure everyone is home safe, every day. Ensuring compliance and promoting safe work practices is what drives me in my role to always do and be the best I can, not only for myself or CSS but for everyone I work alongside. Outside of work I am a dog-mum to three crazy French Bulldogs, Louie, Luna, and Nova. I live in Epping, so we enjoy lots of walks exploring in the forest.

I'm beyond excited to continue and progress in my role at CSS for many years to come.

The Christmas period and New Year can be a difficult time for people, including those in the construction sector. We recently came across the "thelostcity" campaign and thought we'd share it with you.

THE LOST CITY.ORG

Campaign Overview:

The "Lost City" campaign sheds light on an urgent crisis in the UK construction industry. Over 7,000 construction workers have died by suicide in the past decade – equivalent to the population needed to build a new city. The campaign starkly illustrates the human and economic impact of these tragic losses. This effort aims to raise public awareness and secure £2.5 million to provide life-saving mental health support, including therapy sessions, to tradespeople across the UK.

This is the city that will never be built.

Because the 7,000 construction workers it would take to build it have died by suicide in the last decade.

The construction industry has a suicide rate four times the national average. It's a crisis, but one that's relatively unknown outside the industry.

By visualising exactly what they could have built, The Lost City addresses this crisis, showing the true scale of construction suicides.

This is the city that could exist if the construction suicide crisis didn't.

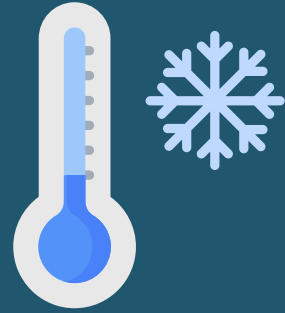


AS WE ENTER THE COLDER MONTHS, IT'S IMPORTANT TO STAY ALERT TO THE CHANGING CONDITIONS ON SITE. WITH SHORTER DAYLIGHT HOURS AND A GREATER CHANCE OF WET AND ICY SURFACES, THE RISK OF SLIPS, TRIPS, AND FALLS INCREASES.

BE SURE TO EXERCISE EXTRA CAUTION WHEN MOVING THROUGH SITE AREAS AND ENSURE THAT WALKWAYS AND ACCESS ROUTES ARE WELL-LIT AND TREATED WITH GRIT WHERE NEEDED.

DURING THIS SEASON, THE USE OF PROPER PERSONAL PROTECTIVE EQUIPMENT (PPE) BECOMES EVEN MORE VITAL. PROMPTLY REPORTING ANY POTENTIAL HAZARDS, NO MATTER HOW MINOR THEY MAY APPEAR, IS ESSENTIAL FOR MAINTAINING A SAFE WORK ENVIRONMENT FOR EVERYONE.

LET'S START THIS YEAR OFF STRONG WITH HEALTH AND SAFETY IN MIND AND KEEPING PEOPLE SAFE THE TOP PRIORITY OF WHAT WE DO



FINES AND PROSECUTIONS

Engineering company fined after 'caring and loving' man killed - [More information here](#)

Company and director sentenced for putting workers at risk while carrying out roof works - [HSE Link](#)



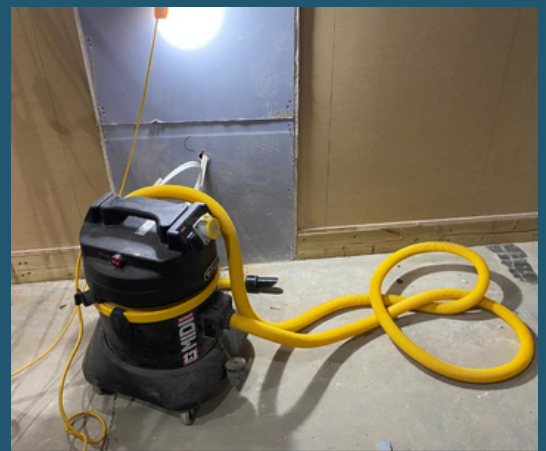
The workers had been renovating the roof of a property in Surrey.

Within the health and safety industry we tend to focus on the negatives; prosecutions and when things go wrong ETC, each month we'll be sharing some good practises we've seen on our site visits



WE'VE OBSERVED SEVERAL FIRE TROLLEYS EQUIPPED WITH BUILT-IN SMOKE DETECTION, ENHANCING THEIR FIRE-FIGHTING CAPABILITIES AND KEEPING PEOPLE SAFE.

MORE EXTRACTION SYSTEMS ARE NOW FOUND ON SITE WITH LESS DRY SWEEPING TAKING PLACE, SHOWING BEST PRACTICE IN KEEPING WORKERS' LUNGS SAFE.



WELFARE UNITS CONTINUE TO GET MORE IMPRESSIVE WITH EACH YEAR. THESE WERE GREAT WHEN SEEN ON SITE.

GOT SOME GOOD PRACTISE YOU'D LIKE TO SHARE? DROP US AN EMAIL

WE ARE HERE TO HELP!

CSS strive to ensure that we offer the best possible advice as early as possible. If you have any concerns, or questions in relation to the project you are working on, please call us so that we can advise and offer any assistance that may be needed. We have a very approachable team who are there to help through the whole project process.

CDM TRAINING



CSS offer a range of CDM training sessions which can be carried out at a location that suits you, or online. This includes CDM training for all duty holders.

If you would like training undertaken please do not hesitate to contact our office on 01869 220649 where we will be happy to help.

Alternatively, if you want to discuss safety matters, or the newsletter contact Phil Davies on 07718 096940 or phil.davies@constructionss.co.uk

